



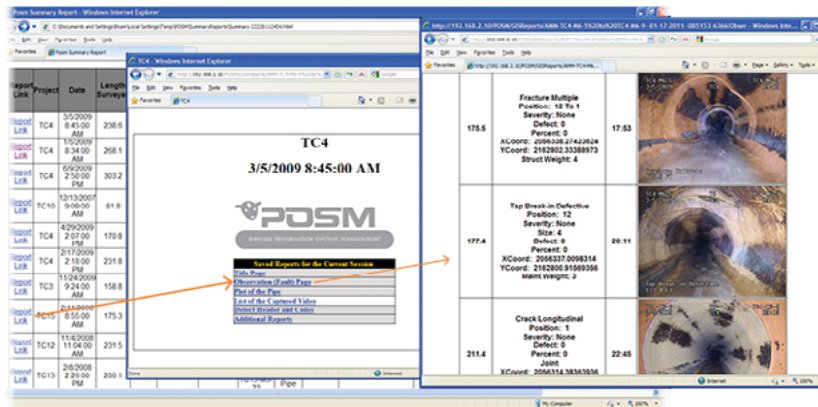
POS M STORAGE

PIPELINE OBSERVATION SYSTEM MANAGEMENT

posmsoftware.com

info@posmsoftware.com

859-274-0041



As Your Storage Needs Grow, POS M Grows With You

When POS M Office will no longer cut it, we offer two fantastic options to upgrade.

POS M Server is our "Premier Storage System," but we understand that some customers have no need to synch up with GIS. That's why we offer POS M Storage, our very powerful mid-level option.

- POS M Storage features and limitations:
- Supports unlimited simultaneous users.
- Saves unlimited sessions on a Microsoft Access Database.
- Not compatible with automatic GIS synchronization.
- Easy, conveniently upgradeable to POS M Server at any time.
- Available in English, Spanish, Portuguese, and Chinese.

NOTE: If your database is larger than 5,000 sessions, we recommend you migrate to POS M Server to maintain maximum speed and efficiency.

NASSCO Version 7 PACP, LACP and MACP Certified.